

**SUBMITTAL TO THE BOARD OF SUPERVISORS
COUNTY OF RIVERSIDE, STATE OF CALIFORNIA**



FROM: County Counsel
SUBJECT: Ordinance No. 348.4132

SUBMITTAL DATE: August 5, 2003

RECOMMENDED MOTION: That the Board of Supervisors adopt Ordinance No. 348.4132 amending the zoning in the Antelope Valley Area shown on Map No. 2.2046 Change of Zone Case No. 6644.

BACKGROUND: Change of Zone Case No. 6644 was approved by the Board of Supervisors on May 20, 2003.

Katherine A. Lind

KATHERINE A. LIND
Deputy County Counsel

C.E.O. RECOMMENDATION:

APPROVE

Loa Brandt

County Executive Office Signature

Policy
 Policy

Consent
 Consent

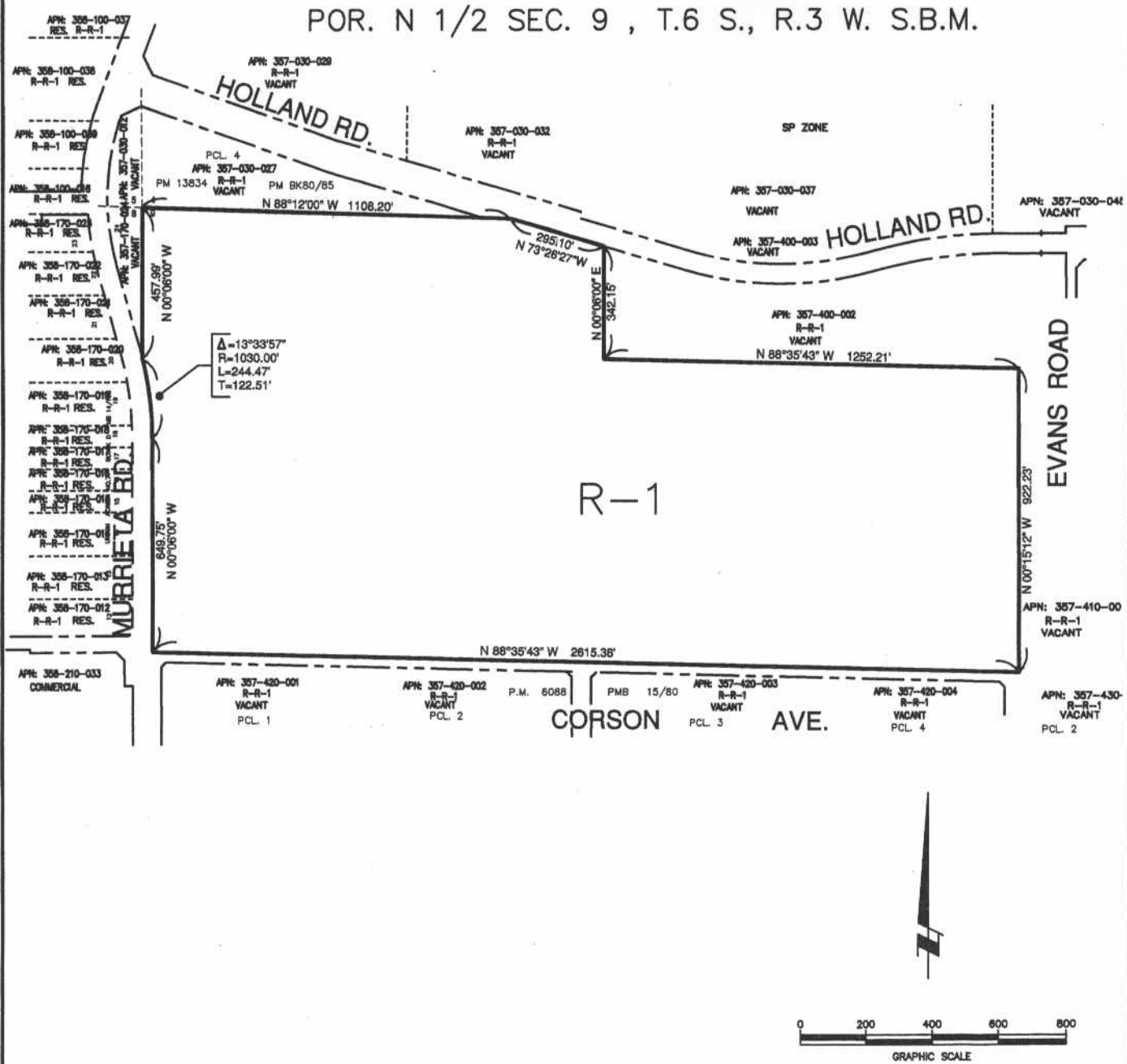
Department Recommendation:
Per Executive Office:

Prev. Agn. ref.

Dist. 3

AGENDA NO.

ANTELOPE VALLEY AREA
 POR. N 1/2 SEC. 9 , T.6 S., R.3 W. S.B.M.



$\Delta = 13^{\circ}33'57"$
 $R = 1030.00'$
 $L = 244.47'$
 $T = 122.51'$

LEGEND
 R-1 ONE-FAMILY DWELLING
 7,200 SQ. FT. MIN LOT AREA

MAP NO. 2.2046
 CHANGE OF OFFICIAL ZONING PLAN
 AMENDING
 MAP NO. 2 ORDINANCE NO. 348
 CHANGE OF ZONE CASE NO. 6644
 ADOPTED BY ORDINANCE NO. 348.4132

AUGUST 19, 2003

RIVERSIDE COUNTY BOARD OF SUPERVISORS

